

Monks Orchard Residents' Association

www.monks-orchard-web.org.uk
email: monksorchardweb@btinternet.com

Croydon

(Non Party)

(Independent)

~ ~ ~ ~ ~
NEWSLETTER - Spring 2011



Crocuses in Woodland Way and Snowdrops at St Georges Church
Photographs by Thomas Ethridge

I N T H I S I S S U E :

Page 2	Chairman's Comments	Page 13	Localism
Page 3	AGM 2011	Page 14	Ashburton SNT
	AGM Proposed Program	Page 15	Shirley SNT
Page 4	Eden Park Music Club	Page 16	Libraries Consultation
Page 5	Open Spaces in Monks Orchard	Page 18	Shirley Lunch & Supper Club
Page 6	Planning Report	Page 19	Presentation of Mayor Citation Shirley Lunch & Supper Club
Page 8	Evolution at Biggin Hill Airport	Page 20	MORA 2010 Accounts
Page 11	Village Green Application	Page 22	New Year Resolution
Page 12	John Ruskin Choral Society Area Managers & Road Stewards	Page 23	Edenham High Boot Sale Jumble Sale
		Page 24	MORA Committee 2010 - 2011

The Monks Orchard Residents' Association was founded in 1923, and represents approximately 2,500 residents.

Chairman's Comments

No doubt everyone will be pleased to see the back of the winter snow and can look forward to spring with the Crocus and Daffodils. We often hear complaints about the performance of our Council but I am sure you will agree our 'bin men' were excellent in the way they were able to collect our refuse in such winter conditions and deserve our congratulations.

It is with regret I have to report the resignation of Rosemary Rabin, our trees and open spaces representative. You will have read with interest her articles regarding our local fauna and flora which shows how interested she is in the subject and the research she has done for our benefit. She is clearly a very busy lady and has interests in other areas which require her attention. We wish her well. This brings me to the requirement for a replacement for Rosemary; we also have requirements for a Vice Chairman and someone who is interested in our local highways and transport. Anyone able to spare a few hours a month would be very welcome. Please contact any of the committee at any time.

On an extremely important matter, those who follow Planning Matters in the Newsletters will know of a developer attempting to obtain permission to build flats in Glade Gardens known as a 'Village Green'. MORA has been keen to maintain this as an open area but it appears that the land owner's daughter has been visiting residents in The Glade, pretending to be a MORA committee member and saying MORA is recommending the development. She also seems to be sporting a MORA badge and clipboard with MORA headed notepaper but unfortunately for her we reported her misrepresentation to the QC, Leslie Blohm, heading the inquiry.

Let me assure members this lady is not a MORA committee member and is fraudulently misrepresenting MORA. We now know that she is the daughter of the land owner and she had a very difficult time explaining her actions at the hearing.

Dave King
Chairman

Annual General Meeting 2011

You are invited to attend the eighty-eighth Annual General Meeting of the Association to be held on Friday 15th April beginning at 7.30 p.m. in St. George's Church Hall, Elstan Way, Shirley. Tea/coffee and biscuits will be available from 7:00 to 7:30.

There will be an opportunity to formally meet, talk and question all the local elected representatives and for members to ask questions and raise any concerns about implications of budget cuts in services, etc. Elected representatives are approachable people who are always willing to listen to views on the delivery of services.

Our MP, Gavin Barwell, MP Croydon Central, and our Six Councillors including Avril Slipper the Mayor of Croydon and Steve O'Connell the GLA member for Croydon & Sutton, have all indicated they will be attending. All will take questions relating to Shirley and Ashburton Wards, after the main business of the meeting.

The Mayor of Croydon - Councillor Avril Slipper will give a short talk on her experiences during her Mayoral Year.

In addition, Doctor N T Ford of 2 South Way Surgery, has offered to give a talk on the new NHS structures and changes affecting local health delivery.

Questions will be accepted by the Chairman from the floor of the hall, but those not wishing to speak as a member of the audience are invited to write their questions and pass them to the Chairman before the start of the meeting. Please remember that providing answers to questions on complex issues usually involves preliminary research. Members wishing to have an immediate answer are asked to submit their question in writing with the name and address of the sender prior to the meeting to: Mary Evans, Secretary of Monks Orchard Residents' Association, [REDACTED]

or email to monksorchardweb@btinternet.com.

Meeting Proposed Programme

Essential Association Business

- Apologies for Absence;
- Minutes of the Previous Meeting;
- Matters Arising;
- Chairman's Report;
- Secretary's Report;
- Treasurer's Report - To Receive and Adopt the 2010/2011 Accounts;
- Planning Report;

Security Report.

Representatives of the Ashburton and Shirley Safer Neighbourhood Teams will be in attendance offering the opportunity to raise security concerns.

Election of Officers and Committee for 2010/2011.

Nominations for committee to be received by the Secretary 21 days before the meeting.

The minutes of the 2010 Annual General Meeting were published in the Summer 2010 issue of the newsletter and can be accessed on the MORA website; a few copies will be circulated in the hall.

The order of subsequent business may need to change depending on circumstances on the night:

- Mayor Avril Slipper will give a brief summary of her experiences as Mayor of Croydon.
- Councillor Steve O'Connell, the Member of the Greater London Authority, will report and then respond to questions.
- Gavin Barwell MP will give a brief report back.
- Doctor N T Ford will talk about the new NHS structures and changes affecting local health delivery.
- A panel composed of the Ashburton and Shirley Ward Councillors will report and respond to questions. [Get your questions ready].

Close of Meeting

EDEN PARK MUSIC CLUB

(Formerly Shirley Organ and Keyboard Society)

We invite you to join us, sit back and relax in a friendly atmosphere and listen to professional musicians playing a full two hours of varied music on keyboards and organs recreating sounds of Big Bands, Military Bands, Orchestras, Jazz, Light Classics...the list is endless and the variety enormous. Our concerts are the first Monday in the month (subject to Bank Holidays) at THE LANGLEY PARK SPORTS & SOCIAL CLUB, 2 Hawksbrook Lane, (off South Eden Park Road) Beckenham, Kent, BR3 3SR.

Easy, ample and free parking. Licensed club bar.

Why not try us - What have you got to lose!!!

Contact Bert/Eva [REDACTED].

www.organfax.co.uk/clubs/shirley.html (map of venue on site)

OPEN SPACES IN MONKS ORCHARD

PARKFIELDS [Last one in the series]

Parkfields Recreation Ground is located between Cheston Avenue and Parkfield in Monks Orchard. It covers an area of 13.25 acres, 5.36 hectares. The facilities here are a playing field with two football pitches and a children's playground.

Parkfields was acquired in 1936 by Croydon Corporation to develop as a public open space in a rapidly growing residential area. For many years a further area of several acres was held under licence by the family that sold Parkfields to the council. While the rest of the park was developed for sport this area

gradually developed as a small woodland coppice. When the land was returned to the council the coppice was retained and enhances the park which already had a number of mature trees in the grounds. The



coppice is on the western side of the grounds. The

A paved footpath and cycle way is situated along the eastern side of the grounds. There are no other paved paths in the playing field. There are four benches.

In the eighteenth century this land was a part of the West



Shirley Farm to the south of the Ham Farm.

Information has come from :

Croydon's Parks , An illustrated history. By Mrs M.A. Winterman.

Croydon Libraries Local Studies Pack, Shirley.

Rosemary Rabin—Trees & Open Space Officer

Planning Report

New Applications

2 Greenview Avenue Ref 10/03899/P

Erection of a two storey, two bedroom house at side; formation of vehicular access and provision of associated parking.

Note: This is a modified version of an earlier rejected application. MORA have objected to this application.

Target date for decision: 08/02/2011

Planning Decisions

85 Gladeside; Ref:10/03038/RES

Discharge of conditions; minor modifications to previous plans which were originally approved in 2007.

Notes: MORA did not contest this application.

Decision: Approved - (Reserved Matters)

7-10 Oak Way **Ref:10/03557/P**

The demolition of existing buildings (numbers 7, 8A, 9 and 10), erection of 15 three bedroom two storey houses; formation of an extension to the existing road to include a turning head and provision of associated car parking.

Notes: There has been strong opposition to this application (47 letters of objection). MORA have objected to this application..

Decision: Refused - Delegate Meeting 11/02/2011

59 Greenview Avenue **Ref:10/02431/P**

Alterations/Extension to the existing dwelling; erection of two detached dwellings; formation of vehicular access and provision of associated parking and landscaping.

Decision; Permission refused on 20/10/2010

Appeal Decisions

151 The Glade; **Ref:10/00374/P**
Appeal Ref: **A/10/2131258/NWF**

Demolition of the existing building; erection of a terrace of 3 two storey three bedroom houses with accommodation in the roofspace; formation of vehicular access and provision of associated parking, cycle and refuse storage.

Appeal Decision: Allowed on 24/06/2010

59 Greenview Avenue

Appeal Ref:

Demolition of existing building; erection of two/three storey building with accommodation in roofspace comprising a 40 bedroom care home for the elderly with associated communal landscaping; alterations to vehicular access and provision of associated parking area.

Appeal Decision: Dismissed on 14/10/2010

Ref:09/03647/P

A/10/2125625/NWF



Land to rear of 2-60 Love Lane, Woodside;

Ref:10/10/01682/P

Appeal ref:

A/10/2138073/NWF

Erection of 5 two storey three bedroom terraced houses with accommodation in roofspace, 8 two storey three bedroom semi-detached houses and one detached two storey three bedroom house; formation of access road and provision of associated parking.

Notes: This application is on Metropolitan Open Land [MOL]. Although NOT within MORA's area, we objected as the application was similar to a potential MOL application within our own area. MORA therefore did not want a precedent to be set by Croydon Council where such land was developed.

The original application was refused by the Council on 27/08/2010, however the developer appealed against this decision on 06/10/2010.

Appeal Decision: Dismissed on 18/02/2011

Other Applications

Land at Poppy Lane

Ref: None

MORA understand that plans are being prepared for a planning application for a number of properties, proposed to be built on a large site, which has previously been designated as Metropolitan Open Land [MOL], in Poppy Lane. A meeting was arranged, presumably to explain these plans to local residents. This meeting was cancelled due to snow. MORA await further developments

Evolution at Biggin Hill Airport for the 21st Century

Some residents of Monks Orchard have been concerned about the proposals to allow Biggin Hill Airport to expand its facilities to include a new hotel, a new hangar, an extended runway and larger aircraft parking apron, all to increase the capacity which would result in increased air traffic movements over surrounding areas including Monks Orchard and Shirley residential areas. We have studied the proposals and have been in contact with the airport authorities so we can provide local residents with more accurate information to help to dispel some of their fears.



Gulfstream Jet arrives at Biggin Hill

The airport has two runways, aligned roughly north-south and east-west, which intersect at their respective southern and western ends, forming an L shaped configuration. The longer north-south oriented runway (03/21) is 1,802 metres in length, is usable by aircraft up to [Boeing 737/Airbus A320](#) size, and has an [Instrument Landing System](#) on runway 21. Radar [Air traffic control](#) (ATC) services are provided by Thames Radar at the [London Terminal Control Centre](#) (LTCC), while procedural approach and [VFR](#) (Visual Flight Rules) ATC services are provided by the airport itself.

The main arrival flight path is from the north and enters from the west of Bexley, over Sidcup, west of Chislehurst, Petts Wood, East of Orpington to land on the North-South main runway or if the wind is from the other direction; following the same route as far as Farnborough when a right bank to circle via the southern tip of New Addington and landing on the same main runway but in the reverse direction to previously stated.

The take-off flight path in a northerly direction after one to 1.5 Nautical Miles (NM) takes a right turn between Downe and Farnborough, reaching 3000ft after 2 to 2.5 NM from takeoff. In the southern direction take off is over the valley at Salt Box Hill and banking right, turning at the southern most tip of New Addington and reaching 3000ft South East of Downe. Once aircraft reach 3000ft, control is handed over from Biggin Hill ATC to National Air Traffic Services. Therefore, there will be very little noise

nuisance from air traffic movements from Biggin Hill for local residents in Shirley and Monks Orchard. In fact, the flight paths are designed to avoid built up areas where the flight paths are below 3000ft.

Most of the over flights in this area are en-route to/from Heathrow or Gatwick, all of whom use the Biggin Hill Radio Beacon for navigation for their ascent or descent to/from their destinations. Heathrow destined air traffic from the southeast stack above the Biggin Hill Beacon, circling at constant heights before being called in by ATC to land at Heathrow.

In 2001, the London Borough of Bromley, as freeholder of the airport, succeeded in an action in the [Court of Appeal](#). The court ruling prohibits the airport operators from allowing tickets to be sold for flights into and out of Biggin Hill airport, thus preventing its use for scheduled or holiday charter flights, but allowing business aviation and corporate shuttles. Also, as the local road network around Biggin Hill is not considered suitable for higher levels of traffic, Government Policy has restricted the Airport to cater for only 250,000 passengers in and out each year. The London Borough of Bromley is currently consulting upon proposals put forward by London Biggin Hill Airport to temporarily amend aspects of its operating criteria for the run up to, the period of and a short period after the Olympic Games in 2012.

Should a bid to increase the number of flights also go ahead, Biggin Hill, Westerham and villages such as Brasted, Sundridge and Tatsfield all stand to be affected by an increase in traffic, noise and air pollution, say critics. Also, furious air-show enthusiasts have refused to support the ongoing expansion following the cancellation of the world-famous event after 47 years. They say airport chiefs' plans, hoping to capitalise on the 2012 Olympics, are an "insult" to the heritage of Biggin Hill.



Over the past 40 years, this famous Airport has steadily changed from being a busy RAF base into a commercial regional airport. The historic ties were remembered annually at the international Biggin Hill Air Show.

However, there are a number of benefits spin-offs from the expansion program including:

Investment of £10m in a 70,000 sq ft hangar, maintenance and passenger processing facility, creating 90 jobs, with a further 160 expected over the next few years. Thirty jobs will be created at a new £8m 150-bedroom hotel. An apron extension, another hangar and new



fire station are also in the pipeline.

Alongside the new jobs created by the airport directly, and the additional local

income generated by the Passenger Tax (to be paid directly to Bromley Council), there will be additional benefits for local services and suppliers. Alongside this, the airport and Bromley will receive additional global attention by becoming one of the gateways to the 2012 Olympic Games. Over 800 jobs are currently supported both directly and indirectly by the airport - the proposals have been requested by tenants to ensure that their businesses benefit from a successful Olympic Games.

Overall, the aim is for Biggin Hill to become the high technology hub for South London, providing high quality, high technology jobs with high added value to an international clientele generating valuable investment in the UK.

The airport offers career opportunity visits for Schools, where the options available in aviation are explained and demonstrated. Options include



many of the ATC, Airport Admin and Finance, Aircraft Engineering and Servicing, Rescue and Fire Fighting, Piloting and Navigation and Ground Maintenance plus others.

The Biggin Hill Airport Consultative Committee BHACC has representations from airport operators, the Local Chambers of Commerce and other business groups plus local Residents' Associations and meets about 4 times per year. Councillor L. Clancy (Croydon), attended the 22 October 2009 meeting but has not attended any meetings since. The aims of the Consultative Committee are to inform the local community about developments and to seek to balance economic benefits and environmental impacts and to support local economic activity.

Approved by PR & Media Operation London Biggin Hill Airport.

<http://www.bigginhillairport.com/>

VILLAGE GREEN APPLICATION

Almost a year ago, I put in an application to have a piece of land registered as a Village Green under the Commons Act 2006. The land in question was originally owned by the Metropolitan Police and intended for recreational use by the police employees living in the houses in The Glade which it backed onto. This has been the case since 1956 and in 1960 Glade Gardens was built. At a request from the Met Police, an access was

made into the land, and a small area tarmaced for eight vehicles to park. The rest was a 'field' as we called it and it was subsequently used by all the residents of Glade Gardens for play and parties. When the land was sold in



**View of the Village Green
prior to the fencing off during 2005**

2004 to a prospective developer, it still had open access for a year until a planning application was submitted for 10 flats. MORA and many residents of Glade Gardens and The Glade objected. Planning permission was refused three times, the last being unanimously. The developer appealed to the Secretary of State twice, and on the second occasion, permission was granted.

I was advised by MORA that I could apply for the land to be registered as a village green and therefore submitted the application, successfully with the help of the Open Spaces Society, in 2009. This has just gone to Public Inquiry at Croydon Council and we await the result. However, I am writing this to make others aware that, in preparing the paperwork for the Inquiry, the Objector, i.e. the prospective developer, waited until after I had submitted my papers and then proceeded to endeavour to get statements from the people I intended to use as witnesses for my application. This was done under deception of being a MORA representative. Fortunately, all my neighbours were aware of my application and reported to me what had happened and I was able to alert MORA and Croydon Council of this fact and the QC who was leading the Inquiry.

This was not the only 'dirty deed'. The developers continually tried to undermine my witnesses and told the Inquiry the local residents had been dumping rubbish on his land. I was able to say, in my final statement, that Croydon Council offer an excellent waste collection service, including recyclable and garden waste and that, also, MORA used to be able to collect larger items of waste from the green which has been fenced off for five years now. Therefore, we would have had no need, nor intention, of

dumping rubbish on what was a lovely piece of land. We sincerely hope we can retain this land, but legally it may well be difficult to prove we are a neighbourhood, which is the requirement. Use, as of right, for 20 years up to 2004 was easy to prove – it has been used for fifty. My neighbours were excellent witnesses and were able to show how devious the prospective developer had been – a warning to all. My thanks go to all those who supported me and gave statements in this respect. The outcome is expected in late February.

Hazel Howell-Smith

John Ruskin Choral Society

Conductor Adrian Connell

Do you enjoy singing?

Small lively group of singers, 40+, are looking for new members.

Vacancies in all sections.

No audition and no voice test. Rehearsals Wednesday evenings during term time - at Shirley Methodist Church, Eldon Avenue, Shirley 7:45 - 9:45pm.

Further information contact the Secretary on [REDACTED]

Area Managers and Road Stewards

We still require additional Road Stewards for the distribution of newsletters each quarter and the collection of membership subscriptions once a year.

Any member willing to assist in this important activity please contact:

Diane McInerney on [REDACTED]

**MONKS ORCHARD RESIDENTS' ASSOCIATION
HANDY ADS SECTION**

**Whatever your property requirements
all the signs point to**



285/287 Wickham Road,
Shirley, Surrey CR0 8TJ
T: 020 8777 2121
E: shirley@georgeproctor.co.uk
www.georgeproctor.co.uk

1-2-3 CHIMNEY SWEEPS



A&J NAISH
FAMILY BUSINESS EST. 1870
CHIMNEY CLEANED
USING VACUUM & BRUSH
METHOD

TELEPHONE ANYTIME:
020 8668 9914 020 8654 0847
MOBILE:
07956 282298 07956 385112

**PARKER BROS.
GARAGE**
(CROYDON) LTD.

Service - Sales - MOT



9 - 11 BYWOOD AVENUE
SHIRLEY CR0 7RB
Telephone: 020 8654 1923

The Shirley Practice

www.theshirleypractice.co.uk

Osteopathy
Sports Massage
Acupuncture and
Counselling

from
diagnosis **020 8776 2332**
to rehab



Friday Market

St Francis of Assisi Hall

[opposite Sainsbury car park, Ravenswood Av.]

Craft Stalls, handmade cards, crystal gifts, cd's, silver, bric-a-brac, gift wrap, Home made Jam's & Marmalade, Toy's, Picture Framing, watch & clock repairs, and many more stalls. Etc

Café serving Hot Food
Fridays 9am—1pm

For a Stall Please Call:
Rosie Tel: [REDACTED]



Chiropody and Podiatry

quality service at competitive rates

Sana Mohindra - BEd BSc (Hons) MChs SRCh, STATE and HPC REGISTERED

Home visits available - All routine Foot Care

Calluses and corns - Ingrowing toe nails

Verruca treatments - nail treatments

Foot ulcers & wounds - Diabetic Foot management

SHIRLEY MEDICAL CENTRE
370 WICKHAM ROAD, SHIRLEY

BYWOOD MEDICAL CENTRE
BROOKSIDE WAY

020 8777 0303

020 8251 7282



I. A. McKENNA

ROOFING CONTRACTORS

General Building Work

020 8658 8270

07956 658 808

- All Roof Repairs
- New Roofs
- Flat Roofs

FREE ESTIMATES
ALL WORK GUARANTEED
FULLY INSURED

FIREPLACE TRADE CENTRE

Buy Direct from your local Fireplace company.

Est. over 25 years. From a gas fire part to a complete custom-made surround in Wood, Stone, Marble and Cast Iron. Quality at **UNBEATABLE** prices.

156 Wickham Road, Shirley.
Croydon CR0 8BF
Tel: 020 8654 5466

10% off
Trade Prices
with this ad.

"LEARN 2 PLAY"

Pop, JAZZ & Classical.

Piano lessons are fun !

*Children and adult
beginners, all ages.*

Mr A. Telfer.

020 8665 1292.

Over 20 years experience All examinations covered



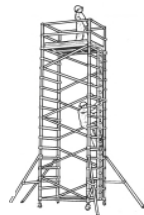
TOOLS

HIRE ■ SALE ■ REPAIR



Focus Plant Ltd - 140 Gipsy Hill, Crystal Palace, London, SE19 1PW

- 😊 Wallpaper Strippers ~ Tile Saws ~ Breakers ~ Drills
- 😊 Access Tower ~ Props ~ Trestles ~ Boards ~ Ladders
- 😊 Saws ~ Mixers ~ Compactor Plates ~ Granders ~ Sanders
- 😊 Generators ~ Lighting ~ Heaters ~ Dehumidifiers ~ Pumps
- 😊 Rotovators ~ Mowers ~ Hedge Trimmers ~ Strimmers
- 😊 Pressure Washers ~ Vac's & Much, Much, More



Floor Sanding Specialist : Machines ~ Lacquer ~ Filler e.c.t.

Delivery/Collection Service ~ Friendly Expert Advice Free

Independent Family Run Company : 7am-5pm Mon to Fri - 8am-12noon Sat

TEL : 020-8766-6364

P WOOLGER

PAINTER AND DECORATOR

RELIABLE AND FRIENDLY
FREE ESTIMATES
INTERIOR AND EXTERIOR

4 BROOKSIDE WAY
SHIRLEY CR0 7RR
020 8656 7201

Hall Hire

Under 8? Over 60?,
St George's Church Hall could
be a venue for your Birthday/
Anniversary celebration.

For Bookings:
Call George Williams
on 8656 1162.



Happy Language Learning
French for 3 - 11 year olds in Shirley
020 8654 7969

CHAPLINS

**HAIRDRESSING SALON
TANNING STUDIO**

Telephone: 0208 777 2337
124 Orchard Way,
Shirley. CR0 7NN.

Alturnertives **Established 1971**

For all your Property Maintenance requirements
Serving the Shirley area for the past 21 years

Plumbing, Electrical, Carpentry, Painting & Decorating
Floor and Wall Tiling,
Kitchens & Bathrooms fully fitted and supplied

For your free quotation call Richard on

020 8656 5821 07956324756

email: richardfturner@aol.co.uk



Reflexology
Indian Head Massage and Reiki
for Ladies



For enquiries and appointments please 'phone

Isabel Mantle, M.I.F.R.,

www.belcaretherapies.co.uk

020 8777 4396



MIRIAMS GARDEN

RELIABLE LADY GARDENER

- **Planting** • **Grass Cutting**
- **Weeding** • **Garden Maintenance**



SHIRLEY BASED

Mobile: 07722 425817

Evenings: 020 8777 3058

desresblinds

Customer service and quality guaranteed by small family business specialising in domestic blinds

- rollers ■ venetians ■ verticals ■ velux ■ pleated
- conservatory roof ■ awnings ■ shutters
- canopies ■ window films ■ curtains

Call us for an estimate or check out our website
Tel/fax: 020 8651 3569. Mobile: 07961 827 917
email: info@desresblinds.co.uk
web: www.desresblinds.co.uk

PC Support & IT Advice to Small Businesses & Home Users

- On-site fix or collect & return
- Supply, Install, Upgrade
- Data-Transfer, Backup
- Email, Broadband, Wireless
- Secure-Erase hard disk



Is Your PC Driving You MAD?



Poppy IT Services

...keeping you sane!

Steve Hunt

020 8777 4700

www.poppyits.com

REASONS TO CHOOSE ALLEN BARFIELDS NO. 15: MATRIMONIAL & FAMILY



Our fee-earner is an Advanced member of the Family Law panel and a member of Resolution, so you can trust us to give understanding & caring advice about any matrimonial and family law issues.

FOR ALL YOUR LEGAL NEEDS... USE OUR EXPERTISE

- | | |
|------------------------------|----------------------------|
| • <i>Moving house</i> | • <i>IHT planning</i> |
| • <i>Divorce</i> | • <i>Debt collection</i> |
| • <i>Wills & Probate</i> | • <i>Property disputes</i> |
| • <i>Company law</i> | • <i>Personal injury</i> |
| • <i>Employment law</i> | • <i>Liquor licensing</i> |
| • <i>Commercial property</i> | • <i>Unfair dismissal</i> |
| • <i>Commercial law</i> | • <i>Immigration</i> |

020 8776 1010 / 020 8680 2050

ALLEN BARFIELDS
SOLICITORS

www.allenbarfields.co.uk

S. D. P. Property Services

- Interior/exterior **Decorating**: Painting, Tiling, Coving, small Plumbing.
- **Carpentry** Work: Laminate/wood Flooring, Decking, Door hanging, Dado rails.
- All **Garden Work** undertaken: Fencing, Hedges, Ponds, Borders.

Fully Insured, Free Estimates, References Supplied



**Call Steve 020 8777 9611,
or 07792 700151**



42 West Way, Shirley, Croydon



OVENCLEAN
The original oven cleaning specialists

- | | | |
|--|--------------|------------------|
| ✓ Friendly, professional & reliable local operator | ● Ovens | ● BBQ's |
| ✓ Completely safe, eco-friendly cleaning system | ● Grills | ● Microwaves |
| ✓ No fumes, no mess, no bother | ● Extractors | ● Hobs |
| ✓ Removes grease, fat & burnt on carbon deposits | ● Filters | ● Ranges & AGA's |

Call Martin on 07792 073306 or visit www.ovenclean.com



Construction. Design. Project Management.

members of the FMB (Federation of Master Builders and European Builders Confederation)

recommended as a 'Trusted Trader' on the WHICH LOCAL website.

Contact : Telephone 020 8776 2406 **Fax** 020 8776 2406

<http://www.trosedevelopments.co.uk/>

Jane Pledger School of Dancing
ARAD Adv., RTS, LISTD.Dip.

**BALLET
MODERN
TAP
STREET JAZZ
ACTING, SINGING
SHIRLEY**

**020-8406 3974
OR
020-8656 8529**



Heritage Brickwork and Restoration

Experienced bricklayers specialising in all types of brickwork. Extensions, landscaping, garden walls and patios.

I am also recommended on [trustatrader](http://trustatrader.com) website

For a free estimate please contact Graham Duffin 07738702414 - graham.duffin78@btinternet.com

CARPET & UPHOLSTERY CLEANING

Professional service
Excellent results
Domestic & commercial
Over 12 years experience
Fully insured - free estimates and advice.

Registered member of checkatrade.com

"Recommended, vetted and monitored local trades & services"

CREST CLEANING SERVICES

0208 407 5274 - 07771 863519

pffamer@hotmail.com

Always

Checkatrade.com
Before you use them

RETIREMENT PROPERTY ADVICE

To achieve a stress free search & move into the perfect retirement property to suit your lifestyle needs, just phone for a chat to find out how I can help you

Gillian Burman Personal Retirement Homes Advisor

Tel: 020 8667 1447

Elite

HEATING LTD



- Save Money Reduce Utility Bills
- Free Quotes Local Established company
- Regular Servicing will maintain efficiency and ensure safe running

**Call Now for Boiler Services from
as little as £50.00 + VAT
Replacement Boilers from £950 + VAT
0208 664 9099
www.eliteheatingservices.co.uk**

DISCLAIMER

To the full extent permissible by law, Monks Orchard Residents' Association disclaim all responsibility, liability, or otherwise, or from any action or decision taken as a result of using this 'Handy Ads Section'. We reserve the right to withdraw any advertisement if we receive any complaints about the service provided. To contact us for more details, please telephone Terry Greenwood on: [REDACTED].

Localism

The Coalition Government plans to introduce a Localism Bill to allow more matters to be settled locally, by the Borough Council or by groups of people concerned with local matters. National Government and M.Ps. will interfere less with local services, from education and social services to planning and transport. The bill gives Councils a general power of competence. This means that in future a Council can do anything its electors or Councillors wish, as long as it is legal. Today, Councils may only do things that local government legislation lays down.

The Bill sweeps away regional planning and completes a new settlement for planning. Major issues like national highways, new railway lines and large projects like power stations will be settled by ministers answerable to M.Ps. The rest will be settled by Councils, who will set out plans where homes and other buildings can go. There will still be a right of appeal to national inspectors if planning permission is refused, but the appeal will be settled not in relation to some regional or government strategy, but based on a local plan.

If approved this new legislation will bring about great change and give some decision making to local residents but to achieve success it is essential that local residents become involved and be willing to devote time to consider local issues. Unfortunately the biggest problem for localism to overcome is public apathy with local concerns. MORA is aware that most local residents do not bother to take any interest in local matters and are willing to leave the decision making to others, that is, until a decision is acted upon that adversely affects their environment, property, or local services. There is also the danger that a group of aggressive know-alls, political, or religious activists are able to impose their influence on local decision making because the majority of local people choose not to bother themselves with local matters.

The idea that decisions should be taken as closely as possible to the people they affect rather than a government department, politically led councils and the Greater London Council is to be recommended. It also invites local people to offer to run local services for the Council or take over public facilities locally. To successfully deal with such important matters individual people will need to form themselves into a group and this may be the time when Associations of Residents can play an important part in gathering and forwarding local opinions. This will only be possible if members are willing to make a positive contribution to the

work of the association. Localism has come at an unfortunate time when cuts are being imposed by central government and consultation takes place on those services residents think are vital for their well-being and those that could reluctantly be changed or reduced. *This is only a brief introduction of what the Localism bill contains. More information can be found on <http://www.consultation-online.co.uk/localism-blog/home>*

Message from Ashburton Safer Neighbourhood Team

Dear Residents

Firstly may I introduce myself as the new sergeant on Ashburton Ward.

My name is John Nunn, and I have worked as a sergeant on Croydon borough for the last 4 and a half years, and have been in post at Ashburton since December 2010.

I have found working within the community very rewarding, and look forward

to hearing the opinions of residents and those working on the ward, as to how they would like Ashburton to be policed. To gauge public opinion we hold numerous public meetings and surgeries which can be found on our website, and welcome direct correspondence via e-mail.

From intelligence gathering, and from opinions expressed at the quarterly Ward panel meeting, the ward priorities have been set for the following year as:-

Burglary, Motor Vehicle crime and Anti Social behaviour, but obviously we are constantly analysing crimes on the ward, and matters that most concern residents.

The team strategy is to be out on the street as much as possible to be a visible presence to deter and detect crime, provide reassurance, and gather intelligence from the community.

Please feel free to contact us with your concerns or needs, and Ashburton team look forward to serving the community of Ashburton, and looking after the needs of its residents.

Regards

**Sgt John Nunn - Ashburton Safer Neighbourhood Team
E-mail: Ashburton.snt@met.police.uk**



Dear Reader

Spring is just around the corner and we do hope you are enjoying the warmer weather, brighter, lighter evenings and mornings.

The team have been busy over the last few weeks keeping the peace, promoting crime prevention and holding surgeries and street briefings. Our next surgery at the Co-Op, Wickham Road, will be held on Tuesday 8 March 2011 from 7 pm until 8 pm and on Tuesday 5 April at the same time. The next surgery at Shirley Library will be held on Saturday 12 March 2011 from 2 pm until 3 pm; the April date is still to be confirmed. Please do visit us for any advice that you may want.

We have all been patrolling the local buses as this has been made one of our ward priorities. We have been giving out advice to travellers about watching all their personal belongings while they travel. Pick pockets do operate on the buses and other public transport. We have a Personal Safety booklet about how to keep safe. If you would like a copy please let us know.

Cold calling is still taking place across the ward; but at a very minimum level. There are “no cold calling” zones and if you would like a safety package about dealing with cold callers then please let us know and we can get a pack to you.

Do you want a street briefing? These take place on roads across the ward at a date and time set by you. We have held quite a few now but would like to know if you would like one in your street. They last for one hour and the public can visit and meet the team during that one hour time slot when it suits them. You can discuss any issues that you may be concerned about. We look forward to meeting you at one of the future street briefings.

We need to make you aware that there is another telephone scam going around at the moment. The person calling you says they are from the local police and then they ask you for your credit card details. Nothing else is discussed. Do not ever give any details out about your bank/building society etc over the telephone. Banks and building societies never call you on the telephone and ask you for such details.

You can now vote for Shirley SNT in the SNT Team of the Year 2010. Call us for a form and we can deliver! Thanks for your support. Call us on 0208 721 2469.

From The Shirley Safer Neighbourhood Team

Libraries consultation:

Proposed closure of Shirley Library

The following is an abridged version of MORA's submission to the Croydon Councils Consultation process.

Council Statement:

The closure of Shirley Library would result in Central and Ashburton Library becoming the



Hubs for the Shirley area, with Ashburton in particular, offering local services to Shirley users. Ashburton has a strong programme of children activities and events that could accommodate Shirley users effectively, and delivers a number of reading groups targeted at families, adults and young people.

MORA Response:

The Ashburton Library, at the Oasis Academy, is not easily accessible for many Shirley residents or residents in the Monks Orchard locality of Ashburton Ward and especially the elderly residents. We therefore refute that this option is acceptable. For some residents it would require two bus route journeys and a walking distance between stops. Many users of Shirley Library are elderly and the Shirley Library is a valuable meeting point for these residents; there are no other council owned facilities at all in the local vicinity such as a leisure centre, swimming pool, adult learning centre or satellite council offices to distribute council or government information. The Shirley Library also provides comprehensive programs of children activities and other events for all ages and the activity groups who feel comfortable with their local friends. It is confidently suggested that Shirley and Monks Orchard residents contribute a higher percentage of Council Tax for their services consumed [more properties in higher bands] but

as is normal, these funds are again being diverted to other areas to the disadvantage of the Shirley & Monks Orchard Residents. Shirley Library is regularly used as a polling station during elections.

Some comments at the recent discussion meeting proposed that the Shirley Residents could use the West Wickham Library and Swimming Pool facilities – If this was an option then a large percentage of the Shirley Residents Croydon



Council Tax should be diverted to Bromley Council who finance these two facilities in West Wickham.

Council Statement:

Shirley Library is an old complex building that requires significant work.

MORA Response:

This necessary maintenance of The Shirley Library and any building work backlog is the result of neglect from the council to attend to these requirements during previous years. It is a disgrace that the single only council facility in the area has been allowed to deteriorate and go un-maintained over the profligate years when the local Shirley residents contribute higher than average council tax revenues.

Council Statement:

The number of visits projected for 2010/11 is 66,579. The library has seen a slight increase in visits between 2006 and 2009 of 0.9%; however, the area in which it is situated has the lowest potential for new homes and a forecast of a population decrease within 1 mile to 2021. The profile of library members shows a wide mix of people, including successful high earners, senior white collar workers nearing retirement and people living in social housing with higher unemployment.

MORA Response:

There are a number of retirement homes and flats within the immediate Shirley Library and Monks Orchard locality which are excluded from those listed in the council statement. Also many of the residents in the area are already retired. There are also residents who use the Computer Facilities at the Library as they do not have equivalent broadband or computer facilities at home. Many of the retired may be asset rich but income poor. With the budget cuts to education and the increases in tuition fees, more younger individuals would require Library services for their education and therefore it would be inappropriate to close them. With increases in unemployment, the Library is one of the highest priority local places for access to all newspapers and literature for job hunting and searching for job opportunities. Also the computer access would be used for updating CV's and drafting application letters.

The Shirley Library has wheelchair access and is used by disabled residents who cannot travel easily to alternative libraries.



Shirley Lunch & Supper Club

The fifth Christmas Supper of the Shirley Lunch and Supper Club took place on 9th December 2010 in The Chateau, Coombe Road.

From the moment we arrived at the venue, the evening was a splendid affair! The room was beautifully decorated and the food was extremely appetising.

The raffle and quiz were a great success and everyone received gifts at the end of the festivities.

We sincerely thank Christine for all her hard work and dedication, which made the early celebration of Christmas a runaway success.

From All the members of the Supper Club.

Presentation of Mayor Citation

At a reception held at Croydon Town Hall on Wednesday 26th January the Mayor of Croydon Councillor Avril Slipper presented a Mayoral Citation to Bob Akers, former Chairman of Monks Orchard Residents' Association, for his long-standing work on behalf of residents and community of Monks Orchard Residents' Association and the people of Croydon in general.



Thanking the Mayor for conferring the Citation, Bob Akers said he was pleased and honoured to receive it but would like it viewed as an acknowledgement of work undertaken by MORA.

Bob Akers was accompanied at the ceremony by Derek Ritson, Editor of the newsletter and website, and Terry Greenwood, Honorary Treasurer.

Shirley Lunch and Supper Club

By the time you receive this newsletter we will already have been on our first lunch outing to West Sussex.

The coach trips planned for this year include visits to the Pudding Club, Portsmouth, Eastbourne and several others.

If you would like to join us, please call
Christine Ross-Smith on [REDACTED]
You will be very welcome.

MORA
ACCOUNT OF INCOME & EXPENDITURE FOR THE YEAR ENDING
31-Dec-10

	2010	2009
INCOME		
Subscriptions	3926	3850
Bank interest	9	8
Advertising revenue	2290	1340
Donations	20	1
	6245	5199
EXPENSES		
Printing & stationery	4815	4626
Road Stewards	400	400
Hall hire (AGM)	56.25	47
Vestry hire (2)	240	nil
Chairman's/secretarial expenses	nil	nil
Sundries	207.75	206
Insurance (BTCV)	100	100
Donations	50	200
Audit	10	10
Website	nil	20
Subscription to BTCV	35	35
Total	5914	5644
Surplus	331	-445
CURRENT ASSETS		
Current account	6426.24	6100
Deposit account	4946.76	4942
CURRENT LIABILITIES	nil	nil
NET CURRENT ASSETS	11373	11042
Carried forward from previous year	11042	11487
Balance for current year	331	-445
Grand total	11373	11042

M.O.R.A.

Monks Orchard Residents' Association



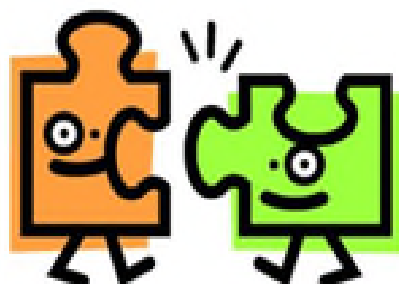
Reporting local news



Protecting our area



Supporting local causes



Bringing people together

Helping to make a happy community

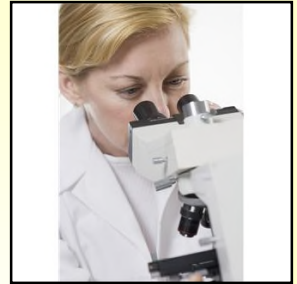
To join and receive regular newsletters
or for general enquiries contact:

Email: monksorchardweb@btinternet.com

Phone: [redacted] or [redacted]

New Year Resolutions regarding bowel cancer - the message behind the reminder stamp on your prescriptions.

Bowel cancer is the third most common form of cancer in the UK, and about one in 20 of us will develop it in our lifetime. It is most common in people over 60 and is our second biggest cancer killer (only lung cancer kills more people).



The National Screening Programme for bowel cancer is an initiative that has been predicted to reduce the risk of dying from bowel cancer by 16%. It is consultant led with a high level of expertise and enthusiasm to make the programme work; preliminary figures suggest a higher than predicted pick-up rate of totally curable early cancers and pre-cancerous polyps. There is a serious risk of the programme failing because of patient apathy or distaste at the task of having to send the stool samples required from the privacy of one's own home for the initial screening.

Screening detected cancers and pre-cancerous polyps cause no symptoms and are totally curable with minimally invasive surgery. In common with other screening programmes like cervical screening and breast screening there is a false negative rate: screening is aimed at well people with no symptoms and will miss some people with actual cancers.

If you have recurrent bleeding from the bottom (rectal bleeding), a persistent change in bowel habit particularly with looser/more frequent bowel motions for more than 6 weeks, persistent unexplained abdominal pain for weeks or a definite persisting lump in your abdomen see your GP for a check-up.

There is a clear "2-week rule" pathway to ensure that possible cancer is excluded or diagnosed quickly now but bowel cancer presenting with symptoms is likely to be more advanced and may require more aggressive treatment and be more difficult to cure.

Take home messages:-

Don't die of apathy or embarrassment - send that sample in when the screening pack arrives.

"If in doubt check it out"- don't ignore persistent symptoms

Bowel cancer - key facts:

Both men and women are at risk of developing bowel cancer.

The risk increases with age. 8 out of 10 people diagnosed with bowel cancer are over 60.

People with a family history of bowel cancer have an increased risk.

People who take little exercise, people who are overweight, and people who have a diet high in red meat and low in vegetables, fruit and fibre are all thought to have an increased risk of developing bowel cancer.

Bowel cancer screening

Screening can reduce the risk of dying from bowel cancer by 16%.

Screening can detect bowel cancer at an early stage when treatment is more likely to be effective.

The screening hub for Croydon is St George's Hospital in Tooting.

For more information about bowel cancer screening talk to your GP or call the NHS bowel cancer screening helpline on 0800 707 6060.

Dr. N T Ford MRCOG MRCGP—GP Practice; 2 South Way, Shirley.

Edenham High School

Orchard Way, Shirley

Saturday 2nd April 2011



9am – 12pm

Booked pitches £7 / £10 on the Day

Call [redacted] or email

edenhamfamilygroup@gmail.net to Book

Jumble Sale

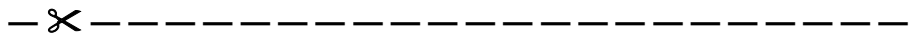
Shirley Methodist Church Eldon Avenue, Shirley

to be held on the 26th March 2011,

starting at 1.30pm.

MORA COMMITTEE MEMBERS 2010-2011

Chairman	Dave King	
Vice Chairman	Vacancy	-
Secretary	Mary Evans	
Treasurer	Terry Greenwood	
Planning	Ian Fraser	
Membership Secretary	Diane McInerney	
Editor/Website	Derek Ritson	
Police Liaison	Jean Cook	
Primary Care	Mercia Nash	
Social Secretary	Christine Ross-Smith	
Transport & Highways	Vacancy	-
Neighbourhood Partnership	Joan Pring	
Trees & Open Spaces	Vacancy	-
Committee Members and Area Managers	{ Michael Nash { Patricia Turner { Anne Horton	
Committee Member	Sheila Wagland	
Committee Member	Nicki Smith	



MONKS ORCHARD RESIDENTS' ASSOCIATION MEMBERSHIP APPLICATION FORM

'I wish to become a member of the Monks Orchard Residents' Association'

Name:	Signature:
Address:	
Post Code:	

Please send this completed form to:

DIANE MCINERNEY
[Redacted]

Thank you for supporting MORA.
Please pass on to a non-member.

Printed by MARSTAN PRESS
Bexleyheath Kent Tel: 020 8 301 5900